

# CLIENT WARDROBE

---

## MATERNITY

At Simone Elisabeth Photography, we like to make sure you feel amazing & comfortable during your shoot. Which is why we have put together a small collection of maternity gowns for your use - this collection is always being added to, so if you don't see a design or colour that suits you, please contact us.



~Anna~

Multiway Maternity Gown with Train

Colour: Copper

Size: 6-18

This gown is made from super soft, luxurious stretch mesh fabric. It has a multiway tie top, allowing this design to be worn in many ways.



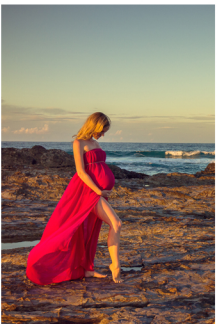
~Anna~

Multiway Maternity Gown with Train

Colour: Dusty Blue

Size: 6-18

This gown is made from super soft, luxurious stretch mesh fabric. It has a multiway tie top, allowing this design to be worn in many ways.



~Anita~

Sheer Pink Gown

Colour: Pink (also available in chocolate)

Size: 6-18

This gown is made from a sheer fabric. It can be worn multiways, with a single tie. It splits down the middle, allowing you to show off your bump or cover it.

*Simone Elisabeth*  
PHOTOGRAPHY

# CLIENT WARDROBE

---



~Rose~

Lace Off-theShoulder

Colour: White + Forrest Green

Size: 12-14 (can be clamped at the back)

This gown is made from high quality stretch knit fabric, with a fitted body and flared fishtail skirt with train. Off the shoulder top with delicate lace ruffle.



~Anna~

Multi-way Gown

Colour: Lilac

Size: 12-24 (can be clamped at the back)

This gown is made from super soft, luxurious stretch mesh fabric. It has a multiway tie top, allowing this design to be worn in many ways.

*Simone Elisabeth*  
PHOTOGRAPHY